

# ***Oak Park and River Forest High School District 200***

*201 North Scoville Avenue • Oak Park, IL 60302-2296*

TO: Committee of the Whole  
 FROM: Tod Altenburg, Chief School Business Official  
 DATE: April 17, 2018  
 RE: Enrollment Projections

**BACKGROUND:**

In 2011, 2014 and 2016, District 200 contracted with Ehlers and Associates to conduct an enrollment projections study. Ehlers and Associates no longer has anyone on staff that can do enrollment projections. Therefore, I reached out to Dr. John Kasarda. Dr. Kasarda works with many school districts. More importantly, he has done enrollment projections for D97 and D90 for the past several years.

**SUMMARY OF FINDINGS:**

Below is a comparison with the 2016 Ehlers Report. The full 48-page 2018 Kasarda Report is attached.

<u>School Year</u>	<u>Series B</u>		<u># Change</u>	<u>% Change</u>
	<u>Ehlers 2016</u>	<u>Kasarda 2018</u>		
2018-19	3,500	3,487	(13)	-0.37%
2019-20	3,583	3,512	(71)	-1.98%
2020-21	3,633	3,591	(42)	-1.16%
2021-22	3,599	3,589	(10)	-0.28%
2022-23	3,575	3,568	(7)	-0.20%
2023-24	3,585	3,593	8	0.22%
2024-25	3,660	3,659	(1)	-0.03%
2025-26	3,646	3,714	68	1.87%
2026-27		3,783	-	
2027-28		3,821	-	

Series B	Enrollment Projection Turnover of Exiting Housing Units and Resulting Family In-Migration <u>Occur as Anticipated</u> through 2027-28.
----------	--

**NEXT STEP:**

For the Committee of the Whole to review the report and recommend the 2018 Kasarda enrollment projection study be presented to the Board of Education for acceptance at its April 26, 2018 meeting.

**Strategic Plan:**                      **Board Goals:**                      **District Policy:** 4:20

**TEL:** (708) 383-0700      **WEB:** [www.oprfhs.org](http://www.oprfhs.org)      **TTY/TDD:** (708) 524-5500      **FAX:** (708) 434-3910



# **Oak Park and River Forest High School District 200**

## **Demographic Trends and Enrollment Projections**

Prepared by

John D. Kasarda, Ph.D.  
Consulting Demographer

March 2018

## Contents

Preface.....	1
Overview of the Oak Park and River Forest High School District 200.....	3
Demographic and Enrollment Trends.....	4
Enrollment Change in District 200.....	12
Determinants of Sender School District Enrollment Change.....	15
Determinants of District 200 Enrollment Change.....	27
The Enrollment Future of Oak Park and River Forest High School.....	32
Projection Methodology.....	32
Oak Park and River Forest High School Enrollment Projections.....	41
Concluding Comment.....	43

## Preface

This report examines housing development and population trends within Oak Park and River Forest High School District 200 and assesses their implications for future enrollment at Oak Park and River Forest High School. The objectives are fourfold. First, I shall review past and present residential development trends and demographic dynamics underlying overall enrollment changes in the District. Next, I shall assess annual grade-by-grade enrollment changes since 2000 at the high school and its sending districts, and analyze student migration/transfer patterns along with other sources of annual enrollment changes. I shall then discuss new housing development potential, housing turnover, and related factors that will shape future enrollments in the District. Finally, I shall project high school enrollment, by grade and by year, for Oak Park and River Forest High School through 2027–28.

All enrollment projections will be in the form of three separate series based on different assumptions about future residential development, housing turnover and family migration to District 200. These three series will provide forecasts of high school enrollment, by grade and by year, of (A) the absolute minimum number of students that may be anticipated, (B) the most likely number of students to be expected, and (C) the absolute maximum number of students that can possibly be foreseen.

In conducting the analysis that follows, I benefited from data provided by professional staff of District 200, as well as by officials and planners of the Villages of Oak Park and River Forest. I would like especially to acknowledge Mr. Tod Altenburg, Chief School Business Official at District 200, who coordinated the local data and information gathering efforts upon which much of this study is based. For his fine assistance and all others who contributed to this study, I am most appreciative.

## **Overview of the Oak Park and River Forest High School District 200**

Oak Park and River Forest High School District 200 is a comprehensive public high school district serving 3,465 students in one high school drawn primarily from the villages of Oak Park and River Forest. The District is headquartered in suburban Oak Park, eight miles due west of downtown Chicago. Covering approximately 7.2 square miles, the vast majority of students come from two feeder districts: River Forest Public School District 90 and Oak Park School District 97. District 200 offers more than 200 courses, a variety of programs for students with special needs, 75 clubs and activities, and 29 competitive sports. More than 90 percent of the faculty hold a master's degree or above. The student body is demographically diverse with just over half classified as non-Hispanic white. Academic achievement is high with an average ACT composite score of 24.6 and a 94 percent graduation rate. Nearly 90 percent of District 200's graduates attend two- or four-year colleges.

## Demographic and Enrollment Trends

Like the majority of Chicago's older, inner-ring suburban communities, the Villages of Oak Park and River Forest were well established before World War II (see Table 1). The fifteen years following the War saw a surge in new residential construction which continued, albeit at a much slower pace, into the 1960s. The housing units constructed in the 1950s and 1960s, as well as existing housing, were very reasonably priced. Table 2 reveals that as late as 1970 owner-occupied homes in Oak Park had a median value of just above \$26,000 and those in River Forest just above \$45,000. The availability of modestly priced single-family housing units attracted considerable numbers of younger families with preschool and school-aged children to the Villages.

New residential construction slowed considerably in the 1970s as both Villages approached build-out. With a community maturation-aging process setting in, overall population began to decline in the Villages, a trend that has continued into the early part of this century. With aging "empty nest" housing turning over to younger households, however, preschool and school-age residents began to increase in the 1980s. Whereas the preschool (under age 5) population dipped slightly in the 1990s in Oak Park and River Forest, their school-age populations generally rose through 2000.

Tables 3 and 4 show the population trends of Oak Park and River Forest through 2016 with age breakouts. One can observe that, while the total number of residents in the two villages have been relatively stable since 1980 and the District residentially built-out, the age structure has changed over the decades. Housing turnover from relatively large numbers of residents age 65 kept a fresh flow of younger families to the Villages. Yet, observe that the number of residents age 65 and over in Oak Park did drop considerably between 1980 and 2000. This slowed “empty nest” turnover to younger families with children. The twenty-year decline in Oak Park's elderly residents reversed in 2000 with solid growth afterwards, again providing a stimulus to empty nest housing turnover.

With close to complete residential build-out characterizing both Oak Park and River Forest by the 1970s, new housing construction has been modest during the past four decades, especially single-family housing. Table 5 presents annual residential construction permits by single-family units and multi-family units between 1990 and 2017. The majority of new single-family dwelling permits since 2000 have been for teardown/replacement homes. In the past three years, however, Oak Park has experienced a fair amount of new multi-family constructions.

Enrollment trends in the two sender districts and District 200 mirrored new housing construction trends and resulting family migration to the Villages of Oak Park and River Forest over the decades. Total district enrollment at Oak

Park Elementary School District 97 followed a roller-coaster trend. It rapidly climbed in the 1950s and 1960s, peaking in the first part of the 1970s at over 6,300 students. From school year 1974-75 to school year 1984-85, the number of students attending District 97 declined from 6,340 to 4,547. Total enrollment moved up modestly to 4,647 in 1986-87 and slipped back to 4,556 in 1987-88. Total District 97 enrollment then climbed annually, reaching 5,359 students in school year 1996-97. Eight years of enrollment declines occurred thereafter with total District 97 again bottoming out at 4,885 students in school year 2004-05. Since then, District 97 enrollment has generally risen reaching 6,117 students in the fall of 2017.

Total District 90 enrollment, which stood under 950 in 1950-51, also steadily grew during the 1950s and 1960s, peaking at 1,378 students in September 1971. The District's enrollment consistently declined thereafter to 827 in 1986-87, then annually rose to 1,242 students in 1995-96. After a one-year dip to 1,195 students in 1996-97, growth resumed with total enrollment climbing to 1,377 students in 2002-03. Between 2002-03 and 2013-14, total District 90 enrollment was relatively stable, averaging about 30-40 students under its 2002-03 count through 2012-13, with an uptick in 2013-14 to 1,359. After dipping to 1,317 students in 2014-15, total District 90 enrollment modestly increased to 1,390 students in fall 2016 before marginally slipping to 1,380 students at the beginning of this school year.

Table 1

Housing Units by Year Structure Built in Oak Park and River Forest

Year Structure Built	Oak Park		River Forest	
	Units	% Total	Units	% Total
Total:	23,261	100.0%	4,079	100.0%
2014 or later	55	0.2%	0	0.0%
2010 to 2013	44	0.2%	6	0.1%
2000 to 2009	832	3.6%	59	1.4%
1990 to 1999	666	2.9%	58	1.4%
1980 to 1989	555	2.4%	91	2.2%
1970 to 1979	1,443	6.2%	299	7.3%
1960 to 1969	1,740	7.5%	374	9.2%
1950 to 1959	1,821	7.8%	788	19.3%
1940 to 1949	1,078	4.6%	419	10.3%
1939 or earlier	15,027	64.6%	1,985	48.7%

Source: 2012–2016 American Community Survey 5-Year Estimates.

Table 2

Median Value of Owner-occupied Housing Units in Oak Park and River Forest: 1950 to 2016

Year	Oak Park	River Forest
1950	\$16,259	\$20,000+
1960	\$21,500	\$34,700
1970	\$26,200	\$45,100
1980	\$66,300	\$109,700
1990	\$139,500	\$256,600
2000	\$231,300	\$386,600
2006–10	\$393,300	\$618,200
2012–16	\$359,100	\$574,600

Source: U.S. Bureau of the Census. Decennial Census of Housing, 1950 to 2000; 2006–2010 American Community Survey 5-Year Estimates, and 2012–2016 American Community Survey 5-Year Estimates.

Table 3

Population by Age in Oak Park and River Forest: 1950 to 2016

Village	Age Group	1950	1960	1970	1980	1990	2000	2010	2012-16
Oak Park	Total	63,529	61,093	62,511	54,887	53,648	52,524	51,878	51,989
	Under 5	4,770	4,788	4,072	3,410	3,880	3,636	3,349	3,070
	5 to 9	4,033	4,524	4,806	3,328	3,424	3,447	3,563	3,383
	10 to 14	3,242	4,517	5,381	3,966	3,244	3,564	3,437	4,007
	15 to 19	3,265	3,816	4,737	4,198	2,976	2,932	3,052	2,758
	20 to 24	3,824	3,071	4,728	4,793	3,520	2,649	2,325	2,550
	25 to 29	4,180	3,269	4,129	6,283	5,620	4,357	3,520	3,383
	30 to 34	4,077	3,192	3,060	5,407	5,503	4,712	3,654	3,695
	35 to 39	4,460	3,430	2,939	3,714	5,388	4,691	3,952	3,747
	40 to 44	4,912	3,865	3,422	2,653	4,857	4,718	4,247	4,215
	45 to 49	5,374	4,234	3,553	2,390	3,187	4,631	4,072	4,423
	50 to 54	5,222	4,557	3,773	2,432	2,294	4,022	4,045	3,539
	55 to 59	4,873	4,622	3,823	2,390	1,832	2,510	3,883	3,226
	60 to 64	3,849	4,078	3,908	2,169	1,740	1,648	3,244	3,695
65 +	7,448	9,130	10,180	7,754	6,183	5,007	5,535	6,298	
River Forest	Total	10,823	12,695	13,402	12,392	11,669	11,635	11,172	11,217
	Under 5	702	804	752	549	745	728	550	672
	5 to 9	770	1,012	980	701	711	919	808	650
	10 to 14	719	1,032	1,211	965	664	974	887	1042
	15 to 19	902	1,235	1,592	1,453	975	1,003	1,240	1266
	20 to 24	857	1,003	1,305	1,260	1,071	765	812	684
	25 to 29	574	467	574	655	678	372	286	325
	30 to 34	620	530	531	707	752	501	327	359
	35 to 39	782	633	620	703	846	791	499	515
	40 to 44	830	851	714	628	884	1,046	736	650
	45 to 49	856	959	814	670	736	1,003	846	717
	50 to 54	872	956	879	721	592	828	1,021	1076
	55 to 59	755	932	871	729	572	607	843	863
	60 to 64	575	777	803	675	501	474	727	728
65+	1,009	1,504	1,756	1,976	1,942	1,624	1,590	1670	

Source: U.S. Bureau of the Census. Decennial Census of Population, 1950 to 2000; 2012-2016 American Community Survey 5-Year Estimates.

Table 4

Combined Population by Age in Oak Park and River Forest: 1950 to 2016

Age Group	1950	1960	1970	1980	1990	2000	2010	2012–16
Total	74,352	73,788	75,913	67,279	65,317	64,159	63,050	63,206
Under 5	5,472	5,592	4,824	3,959	4,625	4,364	3,899	3,742
5 to 9	4,803	5,536	5,786	4,029	4,135	4,366	4,371	4,033
10 to 14	3,961	5,549	6,592	4,931	3,908	4,538	4,324	5,049
15 to 19	4,167	5,051	6,329	5,651	3,951	3,935	4,292	4,024
20 to 24	4,681	4,074	6,033	6,053	4,591	3,414	3,137	3,234
25 to 29	4,754	3,736	4,703	6,938	6,298	4,729	3,806	3,708
30 to 34	4,697	3,722	3,591	6,114	6,255	5,213	3,981	4,054
35 to 39	5,242	4,063	3,559	4,417	6,234	5,482	4,451	4,262
40 to 44	5,742	4,716	4,136	3,281	5,741	5,764	4,983	4,865
45 to 49	6,230	5,193	4,367	3,060	3,923	5,634	4,918	5,140
50 to 54	6,094	5,513	4,652	3,153	2,886	4,850	5,066	4,615
55 to 59	5,628	5,554	4,694	3,119	2,404	3,117	4,726	4,089
60 to 64	4,424	4,855	4,711	2,844	2,241	2,122	3,971	4,423
65+r	8,457	10,634	11,936	9,730	8,125	6,631	7,125	7,968

Source: U.S. Bureau of the Census. Decennial Census of Population, 1950 to 2000; 2012–2016 American Community Survey 5-Year Estimates.

Table 5

Housing Units Authorized by Building Permits in Oak Park and River Forest:  
1990 to 2017

Year	Oak Park			River Forest			Combined		
	Single-Family	Multi-Family	Total	Single-Family	Multi-Family	Total	Single-Family	Multi-Family	Total
1990	1	192	193	0	30	30	1	222	223
1991	13	0	13	0	0	0	13	0	13
1992	1	0	1	0	0	0	1	0	1
1993	3	21	24	8	0	8	11	21	32
1994	0	5	5	2	0	2	2	5	7
1995	1	6	7	9	0	9	10	6	16
1996	4	0	4	4	0	4	8	0	8
1997	5	10	15	3	0	3	8	10	18
1998	11	0	11	4	0	4	15	0	15
1999	32	0	32	3	0	3	35	0	35
2000	6	0	6	6	0	6	12	0	12
2001	14	0	14	9	64	73	23	64	87
2002	13	0	13	4	0	4	17	0	17
2003	13	0	13	5	0	5	18	0	18
2004	6	7	13	4	16	20	10	23	33
2005	6	62	68	8	6	14	14	68	82
2006	60	16	76	5	0	5	65	16	81
2007	35	32	67	2	0	2	37	32	69
2008	23	15	38	3	0	3	26	15	41
2009	4	0	4	2	0	2	6	0	6
2010	2	0	2	2	0	2	4	0	4
2011	0	0	0	3	0	3	3	0	3
2012	2	60	62	2	0	2	4	60	64
2013	1	0	1	2	0	2	3	0	3
2014	10	279	289	0	0	0	10	279	289
2015	29	0	29	0	0	0	29	0	29
2016	20	270	290	32	0	32	52	270	322
2017	3	291	294	7	0	7	10	291	301

Source: Source: U.S. Bureau of the Census. Current Construction Reports. Housing Units Authorized by Building Permits.

## **Enrollment Change in District 200**

Table 6 provides the grade-by-grade enrollment for Oak Park and River Forest High School since school year 1962-63. After climbing to 4,383 students in 1971-72, total high school enrollment declined to 2,629 student in 1990-91 and bounced back modestly to 2,804 students in 1994-95 before slipping back again to 2,698 in 1997-98. Enrollment rose annually thereafter reaching 3,139 students in 2006-07, before receding slightly to 3,076 students in 2008-09. After rising to 3,221 students in 2012-13, enrollment stabilized for a year then slowly climbed again to 3,294 students in 2016-17. This year, however, a major student increase occurred with total enrollment jumping by 171 students to 3,465.

Table 6

## Enrollment Trends in Oak Park and River Forest High School: 1962–63 to 2017–18

School Year	9	10	11	12	Total
1962–63	739	867	753	789	3,148
1963–64	790	750	862	756	3,158
1964–65	797	829	753	876	3,255
1965–66	857	837	849	780	3,323
1966–67	879	904	838	877	3,498
1967–68	858	920	939	887	3,604
1968–69	1,113	906	927	932	3,878
1969–70	1,033	1,132	945	971	4,081
1970–71	1,091	1,067	1,141	970	4,269
1971–72	1,136	1,081	1,048	1,118	4,383
1972–73	1,067	1,141	1,052	1,000	4,260
1973–74	1,021	1,075	1,082	1,038	4,216
1974–75	1,069	1,014	1,034	1,049	4,166
1975–76	1,045	1,073	1,015	1,026	4,159
1976–77	1,090	1,043	1,065	960	4,158
1977–78	1,074	1,085	1,002	1,039	4,200
1978–79	999	1,057	1,029	959	4,044
1979–80	915	962	1,012	932	3,821
1980–81	810	910	911	986	3,617
1981–82	796	815	914	930	3,455
1982–83	784	802	816	927	3,329
1983–84	919	813	795	833	3,360
1984–85	895	926	821	804	3,446
1985–86	815	892	905	826	3,438
1986–87	699	797	870	939	3,305
1987–88	657	706	782	902	3,047
1988–89	675	665	690	794	2,824
1989–90	680	679	652	670	2,681
1990–91	642	686	666	635	2,629
1991–92	713	656	692	678	2,739
1992–93	715	711	645	693	2,764
1993–94	696	720	698	658	2,772
1994–95	713	708	689	694	2,804
1995–96	689	713	728	617	2,747
1996–97	663	691	702	659	2,715
1997–98	667	661	685	685	2,698
1998–99	716	670	650	685	2,721
1999–00	750	702	648	627	2,727

Continued. . .

Table 6—Continued

Enrollment Trends in Oak Park and River Forest High School: 1962–63 to 2017–18

School Year	9	10	11	12	Total
2000–01	751	738	674	666	2,829
2001–02	789	742	723	667	2,921
2002–03	756	772	706	728	2,962
2003–04	817	748	742	716	3,023
2004–05	772	813	745	757	3,087
2005–06	793	766	794	723	3,076
2006–07	800	777	753	809	3,139
2007–08	765	794	770	769	3,098
2008–09	745	764	789	778	3,076
2009–10	810	779	774	819	3,182
2010–11	775	817	772	786	3,150
2011–12	808	818	790	796	3,212
2012–13	771	797	790	863	3,221
2013–14	825	778	812	805	3,220
2014–15	826	813	776	834	3,249
2015–16	826	839	808	789	3,262
2016–17	806	825	829	834	3,294
2017–18	884	815	859	907	3,465

## **Determinants of Sender School District Enrollment Change**

Elementary school districts are open demographic systems whose growth, stability, or decline are affected by four basic factors. The first is the difference between the size of the kindergarten class that enters each September and the size of the previous June's graduating eighth grade class. The second is the net migration/transfer of school age children in the District as they progress through the grades over the years. The third and fourth are the annual changes in special education and pre-kindergarten class sizes, respectively.

Tables 7, 8, and 9 show how total enrollment change in District 97 since the 2000–01 school year may be decomposed into the four component parts. Table 7 provides the grade-by-grade and year-by-year enrollment for the District between 2001–02 and 2017–18. Table 8 decomposes the annual total enrollment changes into the four component parts. Thus, between September 2016 (school year 2016–17) and September 2017 (school year 2017–18) total District 97 enrollment increased by 52 students (6,065 to 6117). The 654 eighth graders who graduated in June 2017 (see Table 7) were replaced this past September (2017) by 623 kindergarten students, for a net class size difference of  $-31$ . However, 160 more students migrated into District 97 or transferred to Oak Park public schools from private or parochial schools than migrated out of the District or transferred to private or parochial schools between September 2016 and September 2017.

During this same period special education declined by 45 students and pre-K by 32 students. The four components ( $-31, +169, -45, -32$ ) sum precisely to the overall 52-student increase in District 97 between September 2016 and September 2017.

Note that every year for the past eleven years, District 97 experienced positive net student in-migration and transfer. During this period, 1,042 more students migrated into District 97 or transferred to its public schools than moved out of the District or transferred to private or parochial schools. Table 9 describes how these net student migration/transfer figures are computed from the enrollment data. The bottom left cell of “45” means that as the kindergarten class of September 2016 progressed to the first grade in September 2017, it gained 45 students (see Table 7 where kindergarten enrollment in school year 2016–17 was 620 and first grade enrollment in school year 2017–18 was 665 students). Conversely, as the fourth grade class of September 2016 progressed to the fifth grade in September 2017, it declined by four students. Summing across the bottom row of Table 6, one obtains 160, which is the net student migration/transfer gain between September 2016 and September 2017 shown in Table 8.

Tables 10 through 15 show the annual enrollment change, sources of this annual change, and net annual student migration/transfer for River Forest Public School District 90 and for School Districts 97 and 90 combined. These

tables should be interpreted identically to Tables 7, 8, and 9 for Oak Park School District 97.

Table 7

## Enrollment Trends in Oak Park School District 97: 2000–01 to 2017–18

School Year	K	1	2	3	4	5	6	7	8	K–8	Sp Ed	PS & PKP	Total
2000–01	474	542	530	530	531	541	576	578	573	4,875	166	—	5,041
2001–02	464	538	536	525	533	524	534	620	570	4,844	156	—	5,000
2002–03	435	533	528	521	509	525	502	544	556	4,653	270	—	4,923
2003–04	461	501	523	539	511	504	548	543	542	4,672	225	—	4,897
2004–05	469	518	506	522	534	528	496	547	536	4,656	229	—	4,885
2005–06	489	548	532	531	556	458	538	516	573	4,741	233	79	5,053
2006–07	501	546	519	475	478	528	544	509	494	4,594	281	79	4,954
2007–08	475	543	543	530	506	503	555	538	512	4,705	266	80	5,051
2008–09	565	553	563	564	537	511	517	573	541	4,924	204	105	5,233
2009–10	610	616	557	584	572	531	512	531	577	5,090	252	119	5,461
2010–11	597	645	613	553	575	573	556	513	548	5,173	261	120	5,554
2011–12	567	619	649	612	560	575	583	556	525	5,246	186	166	5,598
2012–13	609	613	629	642	641	570	593	606	569	5,472	172	177	5,821
2013–14	564	648	618	647	637	656	504	612	602	5,488	144	164	5,796
2014–15	592	597	643	610	640	653	655	584	598	5,572	181	162	5,915
2015–16	591	636	597	642	614	628	638	651	580	5,577	166	173	5,916
2016–17	620	650	636	614	644	624	624	654	654	5,720	168	177	6,065
2017–18	623	665	680	649	623	640	642	635	692	5,849	123	145	6,117

Table 8

Decomposition of Annual Sources of Enrollment Change in Oak Park School District 97:  
September 2000 to September 2017

Transition Year Sept. to Sept.	Change Total Enrollment	Entering K vs. Exiting 8	Net Migration/ Transfer	Change Sp. Ed.	Change PS & PKP
2000 to 01	-41	-109	78	-10	—
2001 to 02	-77	-135	-56	114	—
2002 to 03	-26	-95	114	-45	—
2003 to 04	-12	-73	57	4	—
2004 to 05	168	-47	132	4	79
2005 to 06	-99	-72	-75	48	0
2006 to 07	97	-19	130	-15	1
2007 to 08	182	53	166	-62	25
2008 to 09	228	69	97	48	14
2009 to 10	93	20	63	9	1
2010 to 11	44	19	54	-75	46
2011 to 12	223	84	142	-14	11
2012 to 13	-25	-5	21	-28	-13
2013 to 14	119	-10	94	37	-2
2014 to 15	1	-7	12	-15	11
2015 to 16	149	40	103	2	4
2016 to 17	52	-31	160	-45	-32

Table 9

Net Annual Student Migration/Transfer in Oak Park School District 97:  
September 2000 to September 2017

Transition Year Sept. to Sept.	Grade Transition								Total
	K-1	1-2	2-3	3-4	4-5	5-6	6-7	7-8	
2000 to 01	64	-6	-5	3	-7	-7	44	-8	78
2001 to 02	69	-10	-15	-16	-8	-22	10	-64	-56
2002 to 03	66	-10	11	-10	-5	23	41	-2	114
2003 to 04	57	5	-1	-5	17	-8	-1	-7	57
2004 to 05	79	14	25	34	-76	10	20	26	132
2005 to 06	57	-29	-57	-53	-28	86	-29	-22	-75
2006 to 07	42	-3	11	31	25	27	-6	3	130
2007 to 08	78	20	21	7	5	14	18	3	166
2008 to 09	51	4	21	8	-6	1	14	4	97
2009 to 10	35	-3	-4	-9	1	25	1	17	63
2010 to 11	22	4	-1	7	0	10	0	12	54
2011 to 12	46	10	-7	29	10	18	23	13	142
2012 to 13	39	5	18	-5	15	-66	19	-4	21
2013 to 14	33	-5	-8	-7	16	-1	80	-14	94
2014 to 15	44	0	-1	4	-12	-15	-4	-4	12
2015 to 16	59	0	17	2	10	-4	16	3	103
2016 to 17	45	30	13	9	-4	18	11	38	160

Table 10

## Enrollment Trends in River Forest School District 90: 2000–01 to 2017–18

School Year	K	1	2	3	4	5	6	7	8	K–8	EC	Sp. Ed.	Total
2000–01	123	127	166	146	157	165	145	142	150	1,321	11	2	1,334
2001–02	115	143	135	174	147	155	161	151	145	1,326	7	2	1,335
2002–03	137	128	152	137	172	165	157	166	150	1,364	10	3	1,377
2003–04	109	164	132	157	137	176	161	159	165	1,360	15	2	1,377
2004–05	115	128	160	135	156	147	186	169	161	1,357	7	2	1,366
2005–06	117	139	136	164	143	159	152	183	169	1,362	12	0	1,374
2006–07	101	143	138	134	167	146	169	155	179	1,332	16	0	1,348
2007–08	125	128	149	140	139	164	152	181	157	1,335	8	0	1,343
2008–09	118	158	132	145	144	138	164	152	179	1,330	9	0	1,339
2009–10	114	158	162	144	154	151	143	167	151	1,344	10	0	1,354
2010–11	104	135	162	164	150	154	149	144	168	1,330	10	0	1,340
2011–12	102	138	139	175	168	155	150	149	136	1,312	10	0	1,322
2012–13	107	127	148	143	174	170	156	151	147	1,323	10	0	1,333
2013–14	99	131	128	166	144	176	179	160	155	1,338	21	0	1,359
2014–15	96	131	130	134	164	136	180	166	162	1,299	18	0	1,317
2015–16	121	143	144	139	149	173	142	186	165	1,362	9	0	1,371
2016–17	106	152	152	153	146	157	173	146	185	1,370	20	0	1,390
2017–18	112	138	158	160	158	151	161	176	146	1,360	20	0	1,380

Table 11

Decomposition of Annual Sources of Enrollment Change in River Forest School District 90:  
September 2000 to September 2017

Transition Year Sept. to Sept.	Change Total Enrollment	Entering K vs. Exiting 8	Net Migration/ Transfer	Change EC	Change Sp. Ed.
2000 to 01	1	-35	40	-4	0
2001 to 02	42	-8	46	3	1
2002 to 03	0	-41	37	5	-1
2003 to 04	-11	-50	47	-8	0
2004 to 05	8	-44	49	5	-2
2005 to 06	-26	-68	38	4	0
2006 to 07	-5	-54	57	-8	0
2007 to 08	-4	-39	34	1	0
2008 to 09	15	-65	79	1	0
2009 to 10	-14	-47	33	0	0
2010 to 11	-18	-66	48	0	0
2011 to 12	11	-29	40	0	0
2012 to 13	26	-48	63	11	0
2013 to 14	-42	-59	20	-3	0
2014 to 15	54	-41	104	-9	0
2015 to 16	19	-59	67	11	0
2016 to 17	-10	-73	63	0	0

Table 12

Net Annual Student Migration/Transfer in River Forest School District 90:  
September 2000 to September 2017

Transition Year Sept. to Sept.	Grade Transition								Total
	K-1	1-2	2-3	3-4	4-5	5-6	6-7	7-8	
2000 to 01	20	8	8	1	-2	-4	6	3	40
2001 to 02	13	9	2	-2	18	2	5	-1	46
2002 to 03	27	4	5	0	4	-4	2	-1	37
2003 to 04	19	-4	3	-1	10	10	8	2	47
2004 to 05	24	8	4	8	3	5	-3	0	49
2005 to 06	26	-1	-2	3	3	10	3	-4	38
2006 to 07	27	6	2	5	-3	6	12	2	57
2007 to 08	33	4	-4	4	-1	0	0	-2	34
2008 to 09	40	4	12	9	7	5	3	-1	79
2009 to 10	21	4	2	6	0	-2	1	1	33
2010 to 11	34	4	13	4	5	-4	0	-8	48
2011 to 12	25	10	4	-1	2	1	1	-2	40
2012 to 13	24	1	18	1	2	9	4	4	63
2013 to 14	32	-1	6	-2	-8	4	-13	2	20
2014 to 15	47	13	9	15	9	6	6	-1	104
2015 to 16	31	9	9	7	8	0	4	-1	67
2016 to 17	32	6	8	5	5	4	3	0	63

Table 13

Enrollment Trends in Combined Districts 97 and 90: 2000–01 to 2017–18

School Year	K	1	2	3	4	5	6	7	8	Total
2000–01	597	669	696	676	688	706	721	720	723	6,196
2001–02	579	681	671	699	680	679	695	771	715	6,170
2002–03	572	661	680	658	681	690	659	710	706	6,017
2003–04	570	665	655	696	648	680	709	702	707	6,032
2004–05	584	646	666	657	690	675	682	716	697	6,013
2005–06	606	687	668	695	699	617	690	699	742	6,103
2006–07	602	689	657	609	645	674	713	664	673	5,926
2007–08	600	671	692	670	645	667	707	719	669	6,040
2008–09	683	711	695	709	681	649	681	725	720	6,254
2009–10	724	774	719	728	726	682	655	698	728	6,434
2010–11	701	780	775	717	725	727	705	657	716	6,503
2011–12	669	757	788	787	728	730	733	705	661	6,558
2012–13	716	740	777	785	815	740	749	757	716	6,795
2013–14	663	779	746	813	781	832	683	772	757	6,826
2014–15	688	728	773	744	804	789	835	750	760	6,871
2015–16	712	779	741	781	763	801	780	837	745	6,939
2016–17	726	802	788	767	790	781	797	800	839	7,090
2017–18	735	803	838	809	781	791	803	811	838	7,209

Table 14

Decomposition of Annual Sources of Enrollment Change in Combined Districts 97 and 90:  
September 2000 to September 2017

Transition Year Sept. to Sept.	Change Total Enrollment	Entering K vs. Exiting 8	Net Migration/ Transfer
2000 to 01	-26	-144	118
2001 to 02	-153	-143	-10
2002 to 03	15	-136	151
2003 to 04	-19	-123	104
2004 to 05	90	-91	181
2005 to 06	-177	-140	-37
2006 to 07	114	-73	187
2007 to 08	214	14	200
2008 to 09	180	4	176
2009 to 10	69	-27	96
2010 to 11	55	-47	102
2011 to 12	237	55	182
2012 to 13	31	-53	84
2013 to 14	45	-69	114
2014 to 15	68	-48	116
2015 to 16	151	-19	170
2016 to 17	119	-104	223

Table 16

Net Annual Student Migration/Transfer in Combined Districts 97 and 90:  
September 2000 to September 2017

Transition Year Sept. to Sept.	Grade Transition								Total
	K-1	1-2	2-3	3-4	4-5	5-6	6-7	7-8	
2000 to 01	84	2	3	4	-9	-11	50	-5	118
2001 to 02	82	-1	-13	-18	10	-20	15	-65	-10
2002 to 03	93	-6	16	-10	-1	19	43	-3	151
2003 to 04	76	1	2	-6	27	2	7	-5	104
2004 to 05	103	22	29	42	-73	15	17	26	181
2005 to 06	83	-30	-59	-50	-25	96	-26	-26	-37
2006 to 07	69	3	13	36	22	33	6	5	187
2007 to 08	111	24	17	11	4	14	18	1	200
2008 to 09	91	8	33	17	1	6	17	3	176
2009 to 10	56	1	-2	-3	1	23	2	18	96
2010 to 11	56	8	12	11	5	6	0	4	102
2011 to 12	71	20	-3	28	12	19	24	11	182
2012 to 13	63	6	36	-4	17	-57	23	0	84
2013 to 14	65	-6	-2	-9	8	3	67	-12	114
2014 to 15	91	13	8	19	-3	-9	2	-5	116
2015 to 16	90	9	26	9	18	-4	20	2	170
2016 to 17	77	36	21	14	1	22	14	38	223

## **Determinants of District 200 Enrollment Change**

Annual enrollment change at Oak Park and River Forest High School may likewise be decomposed in a similar manner to Districts 90 and 97, except that entering versus exiting grades are ninth and twelfth, respectively, and that special education students are included in their regular grades. The two basic determinants of annual enrollment change are therefore (1) the difference between the size of the entering ninth grade class each September and that of the previous June's graduating twelfth grade class, and (2) migration/transfer (including dropouts) of students as they annually progress upward through the high school grades.

Tables 16 and 17 provide the decomposition of annual sources of enrollment change at the high school between school years 2000-01 and 2017-18. Table 16 decomposes the annual sources of total high school enrollment change into the above two components. Note that, for the past eleven years, net student migration/transfer has been positive with a major increase (+121) between September 2016 and September 2017. This +121 net student migration/transfer was reinforced by 50 more students in the fall 2017 ninth grade class than graduated the prior June.

Table 17 provides the grade-by-grade, year-by-year annual net migration/transfer figures for Oak Park and River Forest High School. Observe

that the greater net negative numbers occurred between the tenth and eleventh grades while eleventh to twelfth grade transitions have been positive during the past decade.

One other demographic change worth noting is modest increase in racial/ethnic diversity between 2000 and 2011. Since 2011, Table 18 shows that the percent of the District 200 student body that is Hispanic has risen moderately and the percent of students classified as Black has declined. In 2017, 53.9 percent of District 200 were non-Hispanic white, which has been essentially stable for the past five years.

Table 16

Decomposition of Annual Sources of Enrollment Change in Oak Park and River Forest High School:  
September 2000 to September 2017

Transition Year Sept. to Sept.	Change Total Enrollment	Entering 9 vs. Exiting 12	Net Migration/ Transfer
2000 to 01	92	123	-31
2001 to 02	41	89	-48
2002 to 03	61	89	-28
2003 to 04	64	56	8
2004 to 05	-11	36	-47
2005 to 06	63	77	-14
2006 to 07	-41	-44	3
2007 to 08	-22	-24	2
2008 to 09	106	32	74
2009 to 10	-32	-44	12
2010 to 11	62	22	40
2011 to 12	9	-25	34
2012 to 13	-1	-38	37
2013 to 14	29	21	8
2014 to 15	13	-8	21
2015 to 16	32	17	15
2016 to 17	171	50	121

Table 17

Net Annual Student Migration/Transfer in Oak Park and River Forest High School:  
September 2000 to September 2017

Transition Year Sept. to Sept.	Grade Transition			
	9-10	10-11	11-12	Total
2000 to 01	-9	-15	-7	-31
2001 to 02	-17	-36	5	-48
2002 to 03	-8	-30	10	-28
2003 to 04	-4	-3	15	8
2004 to 05	-6	-19	-22	-47
2005 to 06	-16	-13	15	-14
2006 to 07	-6	-7	16	3
2007 to 08	-1	-5	8	2
2008 to 09	34	10	30	74
2009 to 10	7	-7	12	12
2010 to 11	43	-27	24	40
2011 to 12	-11	-28	73	34
2012 to 13	7	15	15	37
2013 to 14	-12	-2	22	8
2014 to 15	13	-5	13	21
2015 to 16	-1	-10	26	15
2016 to 17	9	34	78	121

Table 18

Racial and Ethnic Mix in Oak Park and River Forest High School:  
2000 to 2017

Year	American Indian (%)	Asian (%)	Black (%)	Hispanic (%)	Pacific Islander (%)	White (%)	Two or More Races (%)
2000	0.1	3.3	30.7	4.5	—	61.4	—
2001	0.1	3.1	30.3	4.0	—	62.4	—
2002	0.1	2.5	27.5	5.2	—	64.6	—
2003	0.5	2.6	26.9	4.3	—	65.6	—
2004	0.4	2.9	26.0	4.7	—	66.0	—
2005	0.5	2.8	25.3	4.1	—	61.9	5.3
2006	0.4	3.0	24.9	4.0	—	62.2	5.5
2007	0.4	3.1	24.9	4.7	—	61.6	5.2
2008	0.3	3.0	26.4	5.0	—	59.7	5.6
2009	0.2	2.8	26.7	5.6	—	59.1	5.6
2010	0.2	3.1	27.6	5.4	—	58.2	5.6
2011	0.2	3.1	27.6	8.0	0.0	55.0	6.2
2012	0.2	3.1	27.3	8.4	0.0	55.0	6.0
2013	0.2	3.4	26.7	9.2	0.1	54.6	5.9
2014	0.0	3.3	25.5	11.0	0.0	53.1	7.0
2015	0.1	3.1	24.3	11.1	0.0	53.9	7.6
2016	0.1	3.2	23.5	11.2	0.1	53.8	8.2
2017	0.0	3.3	22.5	11.3	0.1	53.9	8.9

Source: Illinois Interactive Report Card.

## **The Enrollment Future of Oak Park and River Forest High School**

The critical question now becomes, what exactly will happen to enrollments at the high school during the next ten years? Will recent enrollment gains continue? Is the major jump this year in enrollment an aberration or can we expect to see similar increases in future years? Which high school grades will be most affected?

My analysis of likely continuing turnover of existing housing units in the two villages, new housing development forecasts by village planners, and student migration/transfer patterns, lead me to project modest enrollment increases at Oak Park and River Forest High School for the next three years followed by three years of stability, and then four years of enrollment growth, climbing to 3,821 students in school year 2027–28. Before elaborating upon this projection, let me first describe the methodology and baseline information used to generate it.

### **Projection Methodology**

In projecting enrollment for elementary and high school districts, two sets of interrelated factors play central causal roles. The first is resident births (see Table 19) and resulting family size. Any changes in resident births during the

next ten years will not affect Oak Park and River Forest High School. This is because children who will be reaching the ninth grade over the next ten years are already born.

The second, and most critical factor for future enrollment in the schools is net student in-migration resulting from new housing development in the districts and turnover of existing housing units. Relatively little new housing development is anticipated in Oak Park and River Forest over the next 10 years since the villages are essentially built out. That which is anticipated to occur will likely be multi-family units concentrated in Oak Park. Multi-family units tend to yield much smaller numbers of students than single-family units. Yet, housing turnover is expected to continue to attract families with preschool and school-age children to the area over the next ten years. Such anticipated housing turnover no doubt played a role in forecasts for Oak Park and River Forest by the Northeastern Illinois Planning Commission (NIPC) through 2030 and through 2040 under the agency's newer name, the Chicago Metropolitan Agency for Planning (see Table 20).

Because future student migration patterns could vary substantially predicated on the degree of housing turnover (including teardowns/ rebuilds), three sets of enrollment projections will be provided for District 200. These projections will be presented in the form of separate series, based on the following assumptions:

- Series A* Enrollment projection assuming turnover of exiting housing units and resulting family in-migration *are less than currently anticipated* through 2027-28;
- Series B* Enrollment projection assuming turnover of exiting housing units and resulting family in-migration *occur as anticipated* through 2027-28;
- Series C* Enrollment projection turnover of exiting housing units and resulting family in-migration *are greater than anticipated* through 2027-28.

The basic methodology used to make the three series of enrollment projections is a modified cohort survival procedure. Average survival progressions were computed for each grade transition for the sender districts for the past four years. The average survival progressions reflect the grade-by-grade, year-by-year migration/transfer data shown in the previous tables. These average survival progressions (adjusted for major inconsistencies in any particular year) were then applied to compute baseline enrollment projections (via conventional cohort survival techniques) for combined District 90 and District 97. The sizes of their future entering kindergarten classes were estimated using trends in birth registration data, recent kindergarten enrollment patterns, and anticipated housing turnover in Oak Park and River Forest.

The next step was to adjust projected enrollment each year in grades 1 through 12 for possible alterations in housing turnover and in-migration of families with preschool and school-age children to Oak Park and River Forest. To obtain the Series B modified enrollment projections, it was assumed that housing

turnover (including teardowns and rebuilds) and resulting family in-migration would reflect, on average over the years, trends from recent years. Figures 1 and 2 show the number of housing units sold quarterly between 2000 and the second quarter of 2017 for Oak Park and River Forests along with the median sales prices. Series B anticipates the recovery in housing turnover (sales) to continue for the foreseeable future.

Series A projections were made deflating housing turnover and resulting family in-migration by approximately 20 percent. Series C projections assume housing turnover and resulting family in-migration would exceed most recent rates by 15 percent. The Series A and Series C projections reflect, respectively, the absolute minimum number and absolute maximum number of students that might be expected were housing sales (turnover) to worsen or accelerate over recent years (Series B). In the vast majority of the 250+ demographic studies I have conducted for Chicago suburban school districts since the 1970s, actual enrollment has typically ended up being quite close to those that had been projected in Series B and only rarely fell outside the Series A and Series C parameters.

Oak Park and River Forest High School enrollments were projected by feeding the appropriate District 90 and District 97 graduating middle school students to the ninth-grade classes. Adjustments were also made for private and

parochial school transfers to the high school as well as movers from out of the district (as well as dropouts).

Table 19

Births to Residents of Oak Park and River Forest: 1980 to 2015

Year	Oak Park	River Forest	Sum
1980	781	122	903
1981	816	94	910
1982	824	100	924
1983	821	117	938
1984	868	124	992
1985	822	124	946
1986	758	139	897
1987	798	143	941
1988	751	142	893
1989	731	141	872
1990	661	116	777
1991	720	118	838
1992	852	142	994
1993	828	138	966
1994	804	127	931
1995	793	116	909
1996	792	121	913
1997	787	151	938
1998	737	125	862
1999	735	115	850
2000	746	116	862
2001	748	99	847
2002	687	109	796
2003	722	121	843
2004	706	88	794
2005	677	107	784
2006	675	80	755
2007	664	89	753
2008	662	68	730
2009	655	79	734
2010	638	46	684
2011	617	76	693
2012	619	86	705
2013	602	76	678
2014	626	80	706
2015	582	98	680

Source: Source: Illinois Department of Public Health, Automated Vital Records System, 1980–2006; Cook County Department of Public Health, 2007–2015.

**Table 20**

**Change in Population and Household in Oak Park and River Forest:  
2010 to 2030 and 2014**

**2010 to 2030**

Population				
Village	2010 <sup>a</sup>	2030 <sup>b</sup>	Change	% Change
Oak Park	51,878	54,280	2,402	4.6
River Forest	11,172	11,630	458	4.1
Households				
Village	2010 <sup>a</sup>	2030 <sup>b</sup>	Change	% Change
Oak Park	22,670	23,103	433	1.9
River Forest	3,961	4,099	138	3.5

**2010 to 2040**

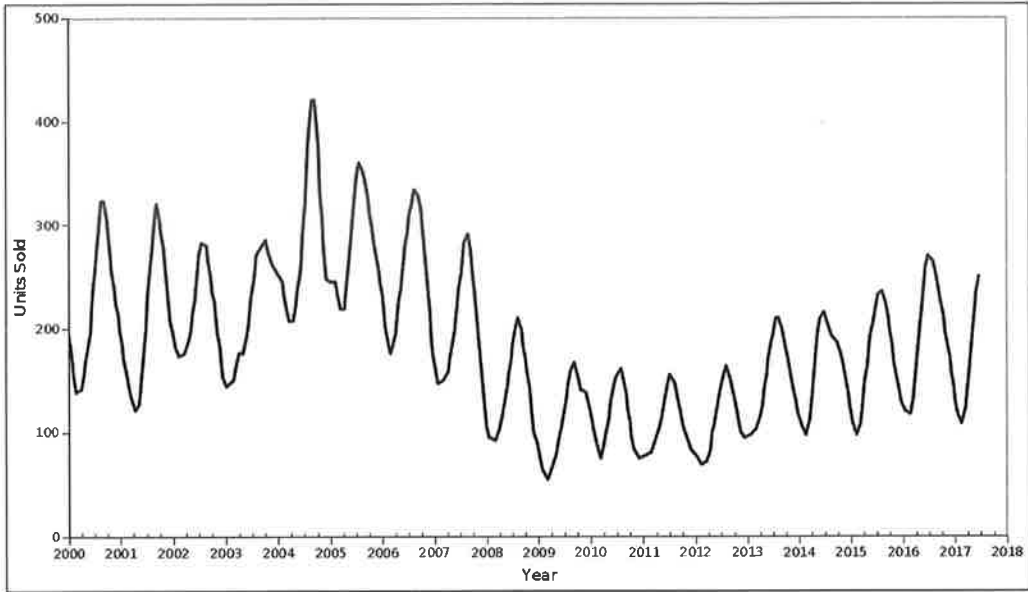
Population				
Village	2010 <sup>a</sup>	2040 <sup>c</sup>	Change	% Change
Oak Park	51,878	56,875	4,997	9.6
River Forest	11,172	14,162	2,990	26.8
Households				
Village	2010 <sup>a</sup>	2040 <sup>c</sup>	Change	% Change
Oak Park	22,670	24,949	2,279	10.1
River Forest	3,961	5,718	1,757	44.4

Source: <sup>a</sup>U.S. Bureau of the Census. Decennial Census of Population and Housing, 2010. <sup>b</sup>Northeastern Illinois Planning Commission 2030 Forecasts by County and Municipality of Population, Households and Employment. September 27, 2006. <sup>c</sup>Chicago Metropolitan Agency for Planning 2040 Forecast of Population, Households and Employment. October 10, 2014.

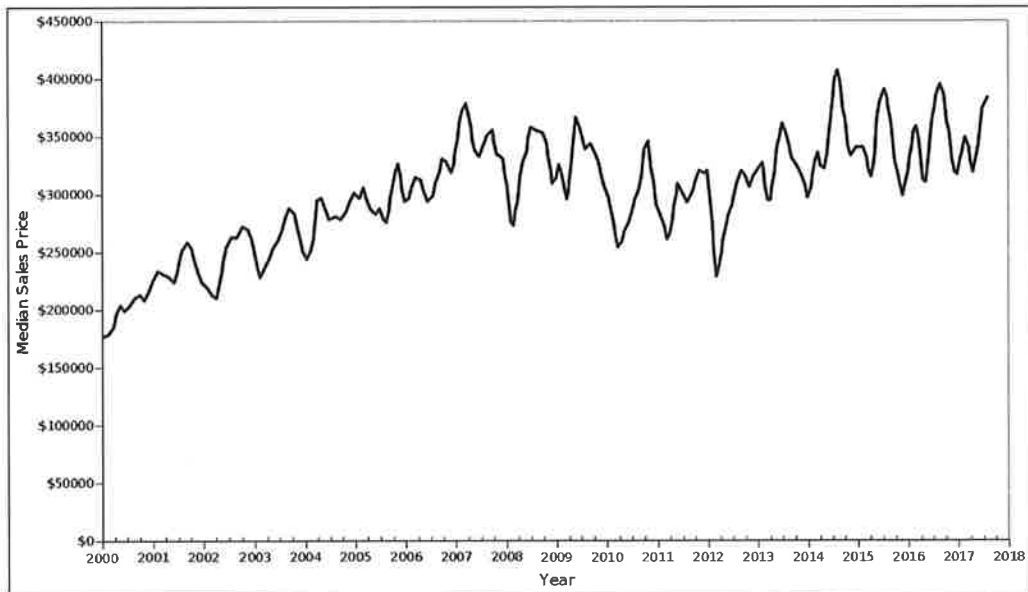
Figure 1

Home Sales by Quarter Price in Oak Park: 2000 to 2017

Units Sold



Median Sales Price

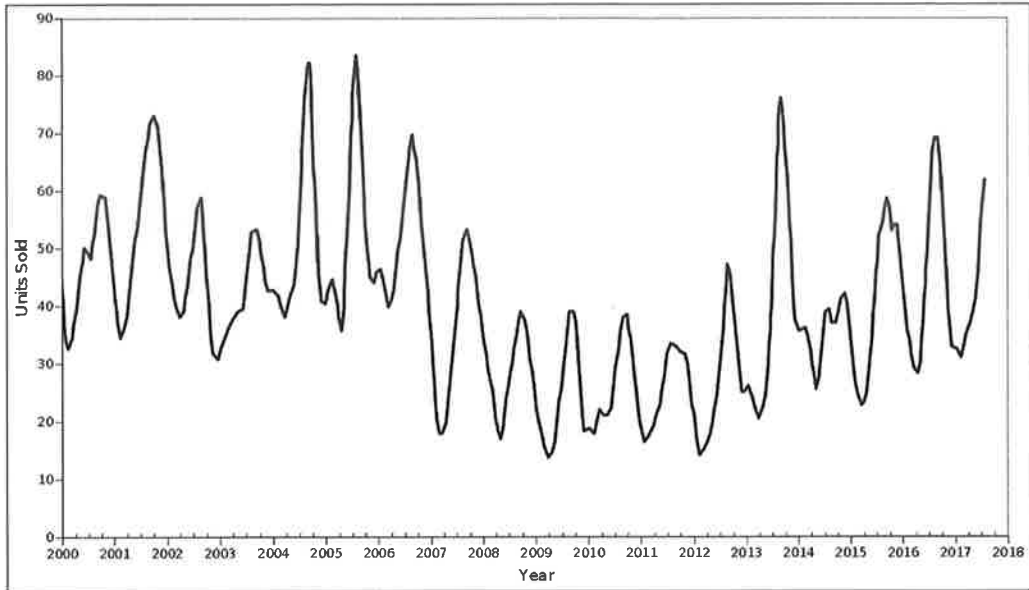


Source: Adapted from Trulia.com

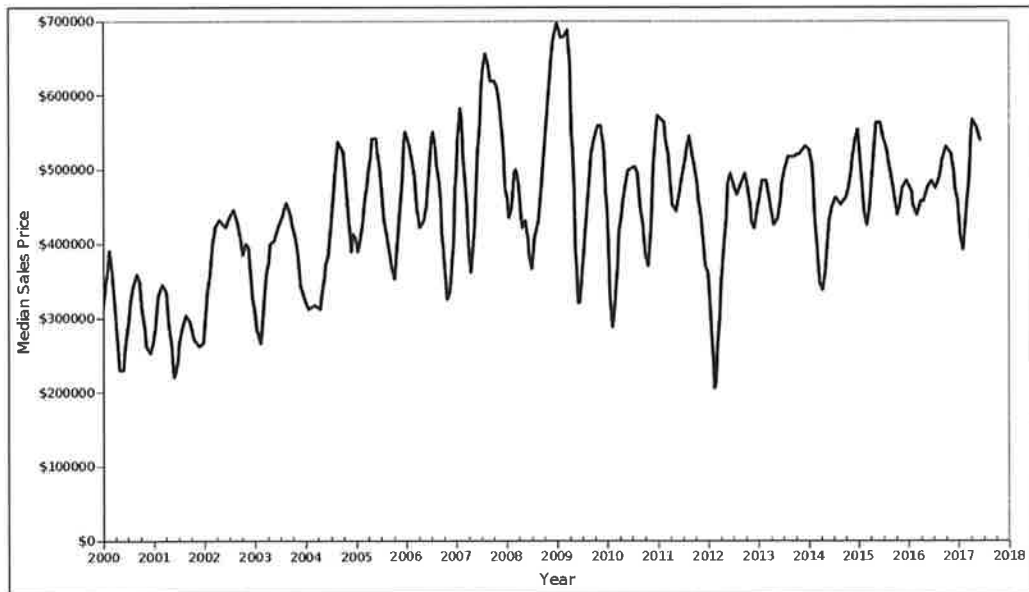
Figure 2

Home Sales by Quarter Price in River Forest: 2000 to 2017

Units Sold



Median Sales Price



Source: Adapted from Trulia.com

## **Oak Park and River Forest High School Enrollment Projections**

Tables 21, 22, and 23 provide the Series A, Series B, and Series C projections, by grade and by year through school year 2027–28, for Oak Park and River Forest High School. Should housing turnover and in-migration of families with preschool and school-age children be less than currently anticipated (see Table 21), total high school enrollment, which this past fall stood at 3,465, will be relatively stable for the next three years. Total enrollment will then drop to 3,301 in 2022–23. Afterwards, enrollment will slowly rebound to 3,459 students in 2027–28. While Series A may be considered too conservative by some, its prospect should not be ruled out entirely. If mortgage interest rates rapidly rise or the nation and Chicago region slip back into a prolonged recession, Series A could become a reality.

If future housing turnover and family in-migration occur as anticipated, however, enrollment at Oak Park and River Forest High School will modestly rise to 3,591 in 2020–21 then stabilize close to that number through 2023–24 (see Series B, Table 22). Total high school enrollment will then climb to 3,821 in 2027–28 under Series B assumptions, the series I consider most likely.

Under the greater than anticipated future housing turnover and family in-migration assumptions (Series C), Table 23 shows that Oak Park and River Forest High School total enrollment will steadily climb, exceeding 3,700 students in

2020–21, 3,800 in 2023–24, 3,900 in 2025–26, and reaching 4,085 students in 2027–

28. This series represents the absolute maximum number of students that can possible be foreseen at the high school over the next ten years.

## Concluding Comment

No demographer has a crystal ball. In this report I have assembled the best information presently available and applied professional techniques and judgment to generate the enrollment projections for Oak Park and River Forest High School. Given local housing market dynamics and uncertainties in the coming years, these projections should be monitored and updated regularly to insure that policy decisions are based on the latest and most reliable figures. At this time, it is my hope that the projections and other demographic information contained in this report will be helpful to the District 200 Boards of Education, administrators, teachers, and concerned citizens as plans are made for future space and staff needs at Oak Park and River Forest High School.

John D. Kasarda, PhD.  
San Diego, CA  
March 2018

Table 21

Enrollment Projection Assuming Turnover of Exiting Housing Units and Resulting Family In-Migration  
*Are Less than Currently Anticipated through 2027–28*

<i>Series A Projection</i>											
Grade	2017–18	2018–19	2019–20	2020–21	2021–22	2022–23	2023–24	2024–25	2025–26	2026–27	2027–28
9	884	882	850	844	825	814	847	890	866	869	848
10	815	877	875	843	837	818	810	843	886	862	865
11	859	803	865	863	831	825	809	801	834	877	853
12	907	872	816	878	876	844	841	825	817	850	893
Total	3,465	3,434	3,406	3,428	3,369	3,301	3,307	3,359	3,403	3,458	3,459

Table 22

Enrollment Projection Assuming Turnover of Exiting Housing Units and Resulting Family In-Migration  
*Occur as Anticipated through 2027–28*

<i>Series B Projection</i>											
Grade	2017–18	2018–19	2019–20	2020–21	2021–22	2022–23	2023–24	2024–25	2025–26	2026–27	2027–28
9	884	901	882	890	882	880	912	959	938	949	950
10	815	888	905	886	894	886	883	915	962	941	952
11	859	813	886	903	884	892	882	879	911	958	937
12	907	885	839	912	929	910	916	906	903	935	982
Total	3,465	3,487	3,512	3,591	3,589	3,568	3,593	3,659	3,714	3,783	3,821

Table 23

Enrollment Projection Turnover of Exiting Housing Units and Resulting Family In-Migration  
*Are Greater than Anticipated through 2027–28*

<i>Series C Projection</i>											
Grade	2017–18	2018–19	2019–20	2020–21	2021–22	2022–23	2023–24	2024–25	2025–26	2026–27	2027–28
9	884	916	905	922	925	931	961	1,012	995	1,011	1,019
10	815	895	927	916	933	936	938	968	1,019	1,002	1,018
11	859	825	905	937	926	943	934	936	966	1,017	1,000
12	907	897	863	943	975	964	974	965	967	997	1,048
Total	3,465	3,533	3,600	3,718	3,759	3,774	3,807	3,881	3,947	4,027	4,085